



Workstation Hub Installation

To operate items such as the **BioScan 7 Desktop Reader**, you will need to install a **Workstation Hub**. This hub connects remotely to your TimeClock Plus install, and will be the go-between that connects your fingerprint scanner to the system.

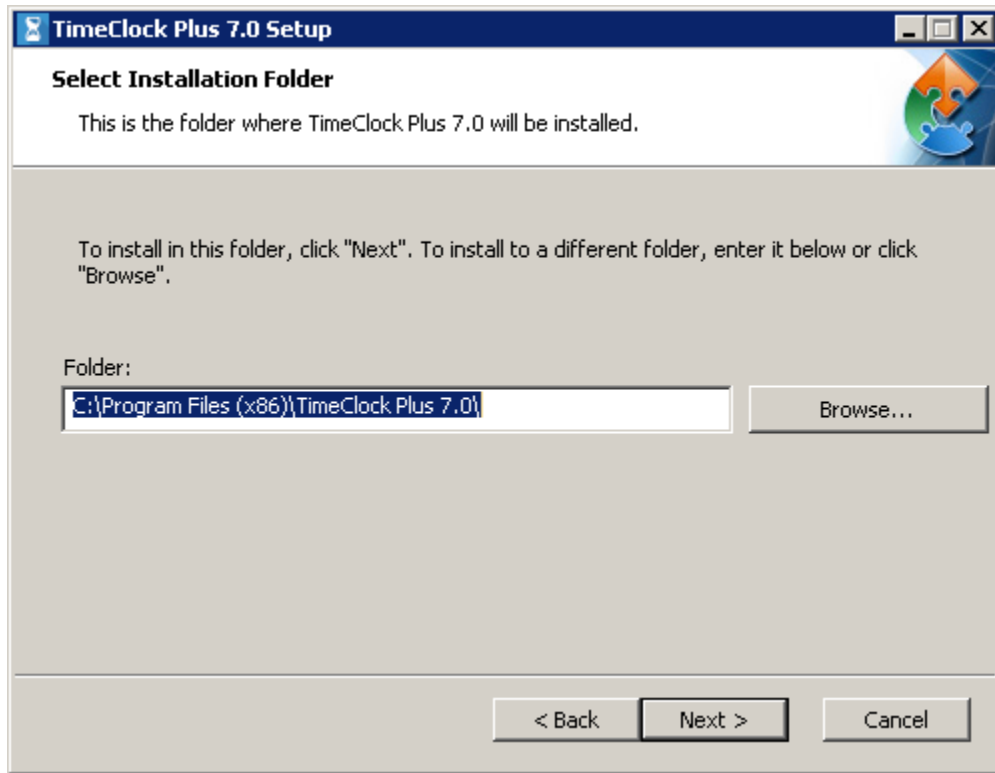
NOTE: If using BioScan 7, **do not** plug the device in before proceeding. The Workstation Hub installer includes the proper BioScan 7 driver installer, which **requires a computer reboot**. Save all your work before proceeding.

Installing a Standalone Workstation Hub

1. On the computer that will operate Workstation Hub, run **tcp.installer.workstation-7.0.x.x.exe**. The numbers in the file name may vary based on the installer version. Depending on whether you are using a perpetual (local) install or TimeClock Plus OnDemand, the proper installer file can be downloaded from the following links:
 - **Perpetual:**
<http://download.timeclockplus.com/Support/70/Installer/v7Workstation.zip>
 - **TimeClock Plus OnDemand:**
<http://download.timeclockplus.com/Support/70/Installer/SaaS/v7Workstation.zip>

NOTE: For assistance with installing Workstation Hub for use with TimeClock Plus OnDemand, please contact TimeClock Plus Technical Support.

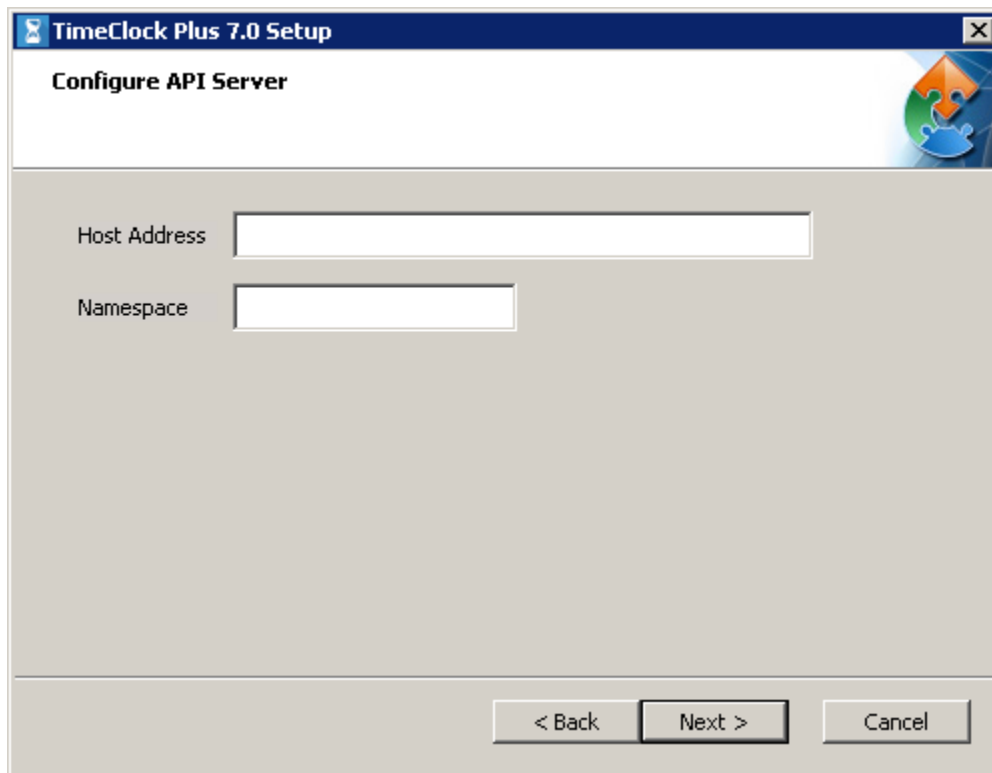
2. Click **Next** on the welcome screen.
3. **Select Installation Folder:** Here, you will be prompted to choose a location to install Workstation Hub, or keep the default location. Click **Next**.



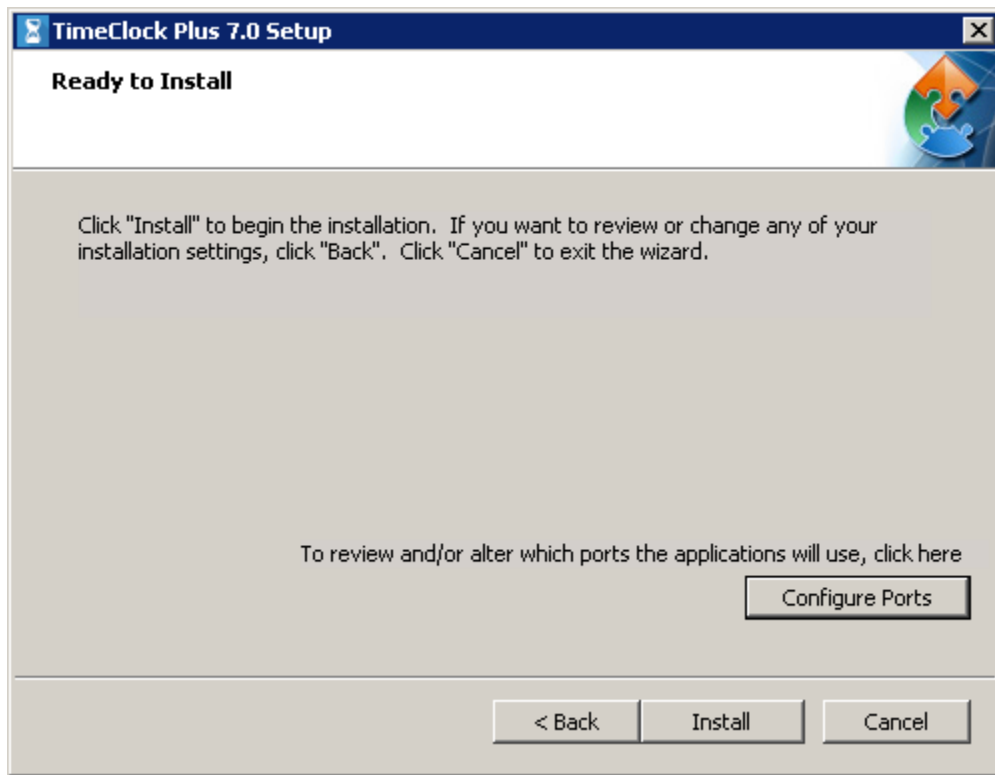
4. **Configure API Server:** This is where you will configure where the hub will connect.
 - **Host Address:** This is the path to the TimeClock Plus API server. Normally, this path will look like **https://[server]/api/v0000**.
 - **Namespace:** If you are using TimeClock Plus OnDemand, or if you are utilizing a system with multiple separate databases, then you may need to specify the namespace that the hub will connect to. If not, then this field can be left blank.

Click **Next**.

OnDemand Users: If you are installing Workstation Hub for your TimeClock Plus OnDemand company, connect to the following host address:
https://tcplusondemand2.com:9443/api/v0000



5. **Ready to Install:** This is the final screen before installation.
 - If you wish to change any settings, click **Back**, or if you wish to discontinue the installation, click **Cancel**.
 - If you need to check or change the ports that Workstation Hub and WebClock will use, click the **Configure Ports** button.



6. Click **Install**. The installer will then download the necessary components for TimeClock Plus Workstation Hub, as well as a local instance of WebClock, and drivers for the BioScan 7 reader.
7. After the installation is complete, you may be prompted to restart the computer.
8. Once the computer finishes rebooting, plug in the BioScan 7 device if you are using it.



Browsing to Workstation Hub

The screenshot displays the Workstation Hub login page. At the top left is a blue user icon. The page title is 'Workstation Hub'. Below the title are three input fields: 'Select Company' with a dropdown menu showing 'Sample Company 1', 'User ID' (highlighted with a red border), and 'Password'. A blue 'Log On' button is located below the input fields.

1. On the desktop, locate and open the **TimeClock Plus Control Panel**.
2. In the **Applications** menu, choose **Go to Workstation Hub**.
3. Workstation Hub will then open in your default browser. You can then log in normally by using a user ID and password.
4. Alternatively, Workstation Hub can be accessed by browsing to **http://[computer name]/app/workstation**.

**For assistance please call Customer Support at: (325) 223-9300
Or visit us at: Support.TimeClockPlus.com**